

Hair Photobleaching

POWERED BY 23ANDME RESEARCH

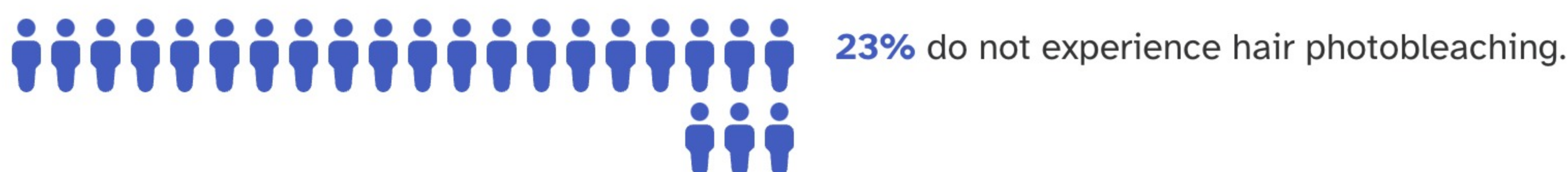


Jamie, based on your genetics and other factors, your hair is **more likely** to lighten with sun exposure.

What is hair photobleaching?

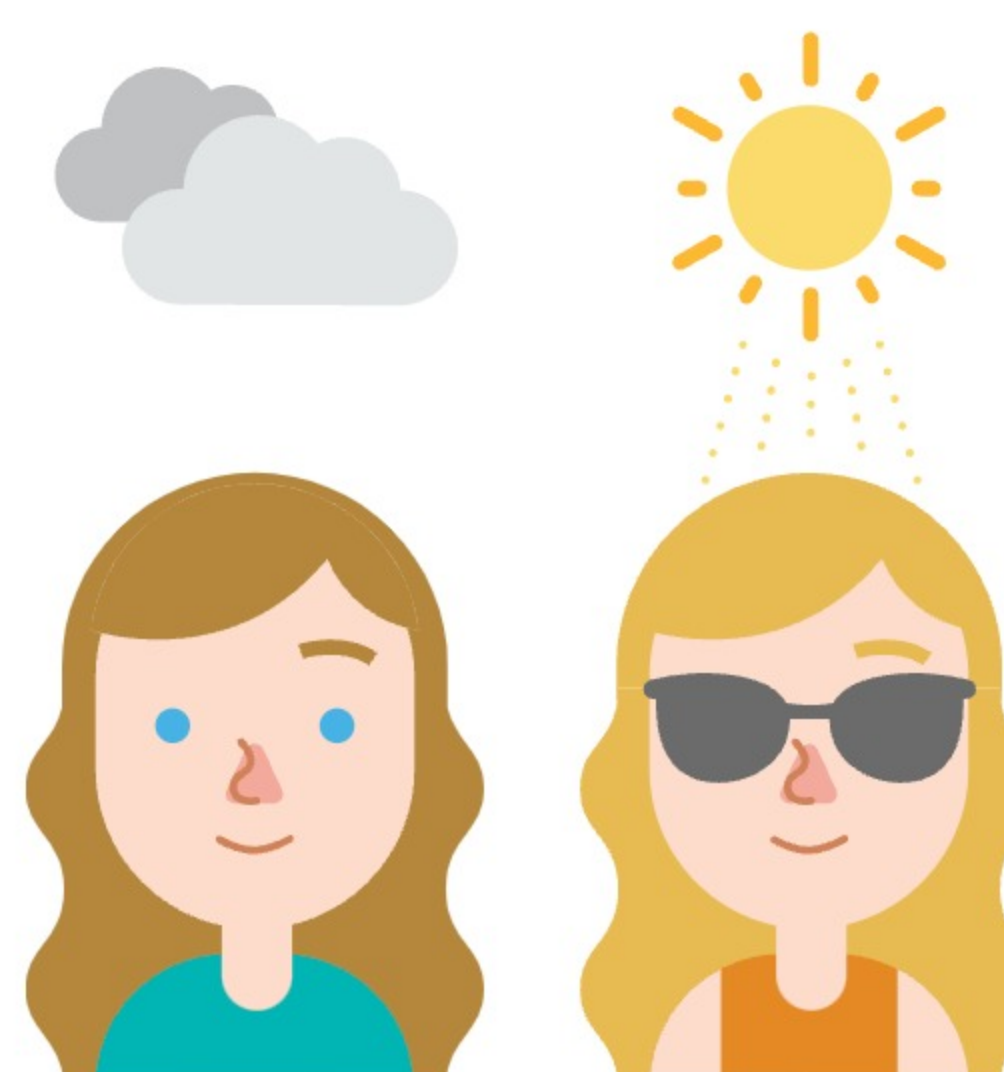
Basking in the warmth of a sunny day is one way to lighten your mood and your hair. Photobleaching is what happens when hair color lightens after long exposure to the sun.

Of people with results like yours:



Solar-powered styling

For some people, frequent sun exposure can lighten their hair color. This happens when high-energy ultraviolet rays from the sun break down the hair's pigment molecules, altering its color. While certain hair types are more susceptible to photobleaching than others, it's important to keep in mind that all hair types are sensitive to the damaging effects of ultraviolet light on hair growth and hair strength. As such, reducing the amount of time spent in the sun is important for everyone's overall hair health. And while we may not know exactly why certain hair types are more sensitive to photobleaching, 23andMe scientists identified 48 genetic markers associated with the trait.



How we got your result

Keep in mind that these results from 23andMe research are preliminary and are meant for informational purposes only.

Contribute to new discoveries by participating in research.

Help us develop more reports like this one by answering questions.



Take Survey

Help us improve this report! Answer a few quick questions



Give the gift of DNA discovery.

Gift a kit

Refer friends, earn rewards.

Get reward

ANCESTRY

- Ancestry Overview
- All Ancestry Reports
- Ancestry Composition
- DNA Relatives
- Order Your DNA Book

HEALTH & TRAITS

- Health & Traits Overview
- All Health & Traits Reports
- My Health Action Plan
- Health Predisposition
- Carrier Status
- Wellness
- Traits

RESEARCH

- Research Overview
- Surveys and Studies
- Edit Answers
- Publications

FAMILY & FRIENDS

- View all DNA Relatives
- Family Tree
- Your Connections
- GrandTree
- Advanced DNA Comparison